

ELx405™ Microplate Washer

The ELx405 Microplate Washer has set the standard in microplate washing based on its superior performance and reliability. This fourth generation product offers several models and options for processing 384- and 96-well microplates to meet all throughput requirements. The unique patent-pending Ultrasonic Advantage™ option eliminates the number one cause of assay failure - clogged manifold tubes. Valuable time is saved with this automated maintenance capability. All ELx405 Models are available in configurations supporting biomagnetic separation. BioTek's newest ELx405 enhancement offers full plate washing of magnetic microspheres used in a growing number of multiplex assays and bead-based ELISAs.

Programming the ELx405 is easy through its simple keypad interface. For those who prefer the advantages of running instruments via computer control, the ELx405 can be controlled with BioTek's optional Liquid Handling Control™ Software. The optional BioStack™ is available for walk-away automation of up to 50 standard height microplates.

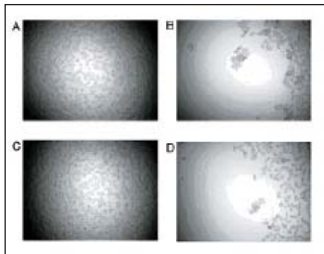


Features:

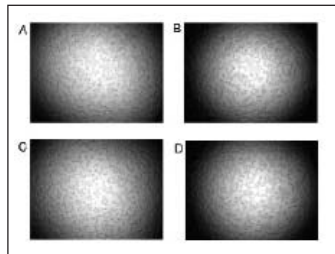
- Magnetic bead assays and standard ELISAs
- Patented Dual-Action™ manifold
- The ELx405 HT is the fastest 384-well plate washer available, designed to enhance high throughput operations
- Extensive onboard software includes independent control of plate position during dispense and aspiration cycles as well as fully programmable fluid volumes and flow rates, shaking, and soaking to lower the CVs of your assay
- Super low rates in the ELx405 Select CW provide gentle dispense for non-disruptive cell washing
- Built-in ultrasonic cleaner
- Easy maintenance with a selection of pre-programmed routines that ensure problem-free operation
- Fluid detection, fluid flow and vacuum sensors provide complete protection during unattended operations



Enhanced Cell Washing:



Before (A/C) and after (B/D) washing two wells containing HEK cells using a standard dispense rate.



Before (A/C) and after (B/D) washing two wells containing HEK cells using an ELx405 Select CW low flow dispense rate.

	Part #	96-well only	96-/384-well	384-well only	Cell washing	Wash buffer switch	Ultra Adv	Mag bead
ELx405™	ELX405R	•						
	ELX405RM	•						•
	ELX405RS	•					•	
	ELX405RSM	•					•	•
	ELX405VR	•				•		
	ELX405VRS	•				•	•	
	ELX405VRSM	•				•	•	•
ELx405™ Select	ELX405U		•					
	ELX405UM		•					•
	ELX405UV		•			•		
	ELX405US		•				•	
	ELX405UVS		•			•	•	
	ELX405UCW		•		•			
	ELX405UCWS		•		•		•	
	ELX405UCWVS		•		•	•	•	
	ELX405UCWVSM		•		•	•	•	•
ELx405™ HT	ELX405HT			•				
	ELX405HTM			•				•
	ELX405HTS			•			•	
	ELX405HTV			•		•		
	ELX405HTVS			•		•	•	
	ELX405HT2		•					
	ELX405HT2S		•				•	
	ELX405HTV2		•			•		
	ELX405HTV2S		•			•	•	
	ELX405HTV2SM		•			•	•	•

Optional Accessories:

- Magnets - Choice of 384- or 96-well formats
- Dispense/Waste Systems – choice of 4L or 10L bottles, standard or high flow vacuum pumps, and 115V or 230V configurations
- Direct Drain Waste System
- Product Qualification Package
- BioStack Microplate Stacker
- Liquid Handling Control™ PC Software



BioTek Instruments, Inc.
Highland Park, P.O. Box 998
Winooski, Vermont 05404-0998, USA

Tel: 802-655-4040 • Toll-Free: 888-451-5171
Outside the USA: 802-655-4740 • Fax: 802-655-7941

Specifications:

Assays:	Magnetic bead Multiplex assays Bead-based ELISAs ELISA
Microplate Types:	384- and 96-well (model dependent) Standard height and low profile
Magnetic Field:	384-well separation 4,300 gauss 96-well separation 6,800 gauss
Manifold Type:	384-well washing - Dual-Action™ 192-tube (16x12) 384-/96-well washing - Dual-Action™ 96-tube (8x12) 96-well washing- 96-tube (8x12)
Washing Speed:	384-well (192-tube manifold) - <20 sec: 1 asp./disp. cycle, 400 µL/well 96-well (96-tube manifold) - <30 sec: 3 asp./disp. cycles, 300 µL/well
Wash Cycles:	1-10
Volume Range:	25 to 3000 µL/well (ELx405 HT)
Fluid Delivery:	Internal positive displacement pump
Buffer Selection:	Optional switching of up to 4 wash buffers
Dispense Precision:	≤ 3% CV
Residual Volume:	≤ 2 µL/well
Onboard Software:	2x24 character LCD display Create, edit or run up to 75 protocols Multiple pre-programmed maintenance protocols
PC Software:	Optional LHC™ PC Software Optional Interface Software for robotic system integration
Soak Time:	1 to 600 seconds
Shaking:	User-programmable speeds and timing
Sterilization:	Chemical
Dimensions:	Depth: 17" (43.2 cm) Width: 14" (35.6 cm) Height: 10" (25.4 cm)
Weight:	30 lbs (13.5 kg)
Power:	Compatible with 100 to 240 V~ ± 10% at 50-60 Hz

*Specifications subject to change

Notes: All models with buffer switching include Dispense System. Only Waste System and vacuum pump should be ordered separately.

High flow vacuum pump recommended for 384-well washing with buffers not containing surfactant.